

Physical Sciences, Mathematics, and Engineering*, PhD Completions and Placement Ten Year Trend

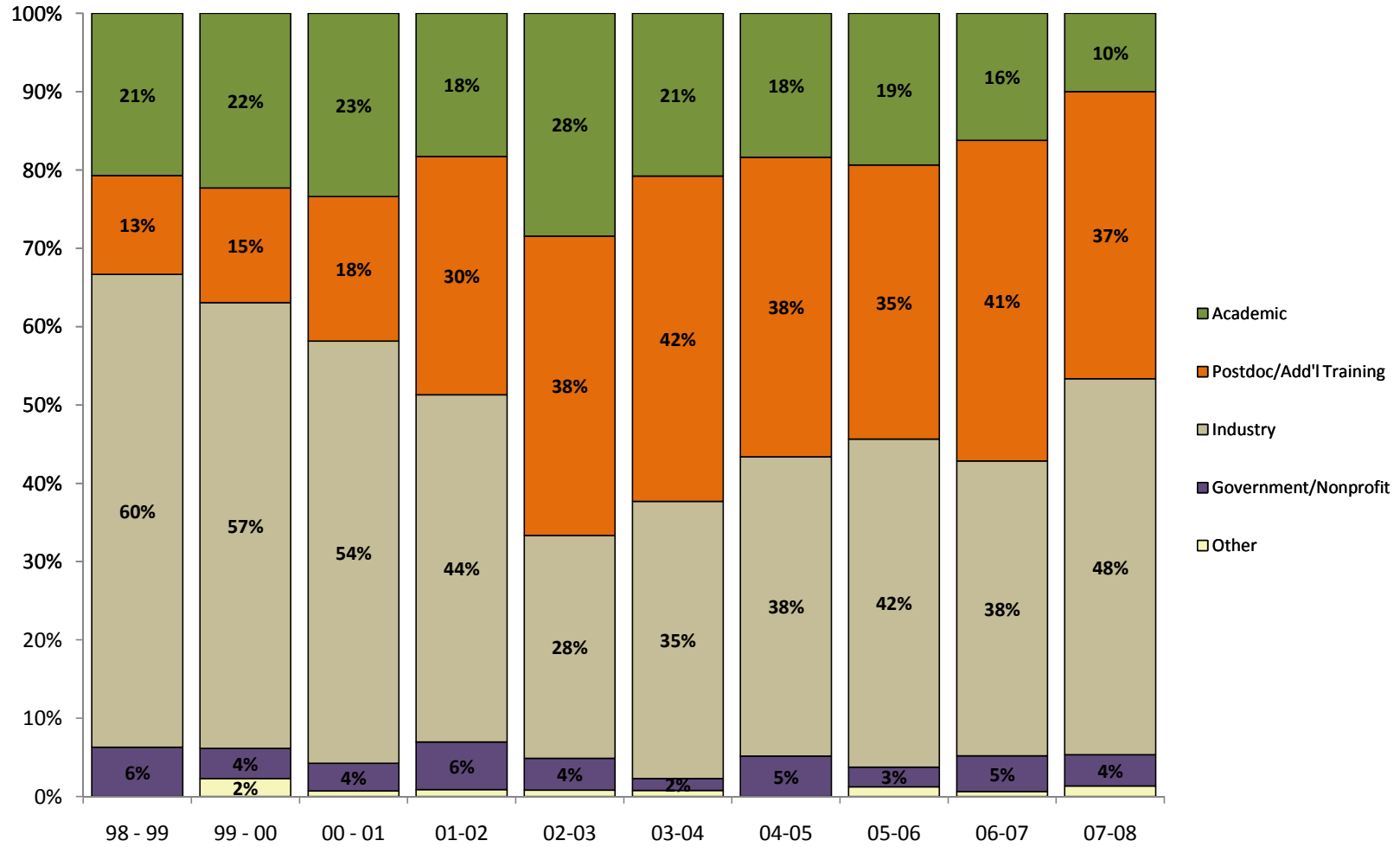
	1998 - 1999	1999 - 2000	2000 - 2001	2001 - 2002	2002 - 2003	2003 - 2004	2004 - 2005	2005 - 2006	2006 - 2007	2007 - 2008	Total
Graduates	114	131	142	115	124	133	138	171	165	174	1407
Grads w/ Placement Info	97%	99%	99%	100%	99%	98%	99%	94%	93%	86%	96%

Placement Category Definitions

Category	Definition
Academic:	Includes teaching, research, and administrative positions at a university or college. Examples include Assistant Professor, Associate Professor, Instructor, Lecturer, and Senior Research Associate
Postdoctoral/Additional Training:	Includes postdoctoral fellows, researchers, associates, and other training positions, such as residents and students pursuing additional degrees. Examples include Postdoctoral Fellow, Postdoctoral Associate, Postdoctoral Researcher, Postdoctoral Scholar, Medical Resident, and Student.
Industry:	Includes research, leadership, technical, and professional positions at private industries and businesses. Examples include Research Scientist, Research Engineer, Consultant, and CEO.
Government/Nonprofit:	Includes positions in local, state, and federal government organizations. Also includes research and leadership positions at nonprofit organizations. Examples include Senior Staff Scientist, Research Analyst, Statistician, Economist, Psychologist, and Director.
Other:	Includes anyone who does not fit into the other categories. Examples include stay-at-home parent, homemaker, on maternity leave, teaching K-12, self-employed, no plans to work, and deceased.

*Excludes discontinued programs

Physical Sciences, Mathematics, and Engineering, PhD Graduates First Placement Category by Graduation Year, Ten Year Trend



Grads w/
placement

111

130

141

115

123

130

136

160

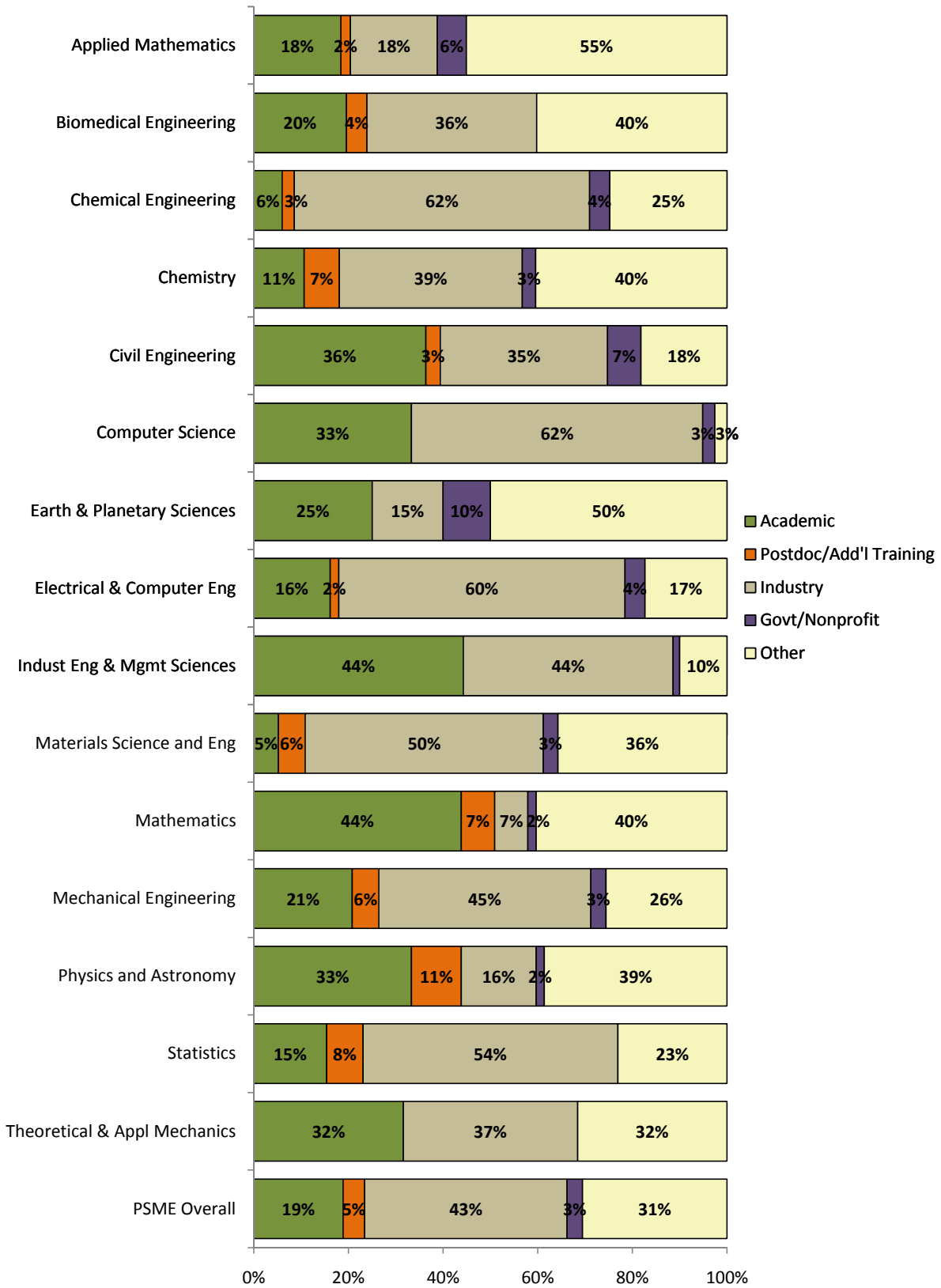
154

150

Source: The Graduate School

Graduates with First Placement Information = 1350 (96%)

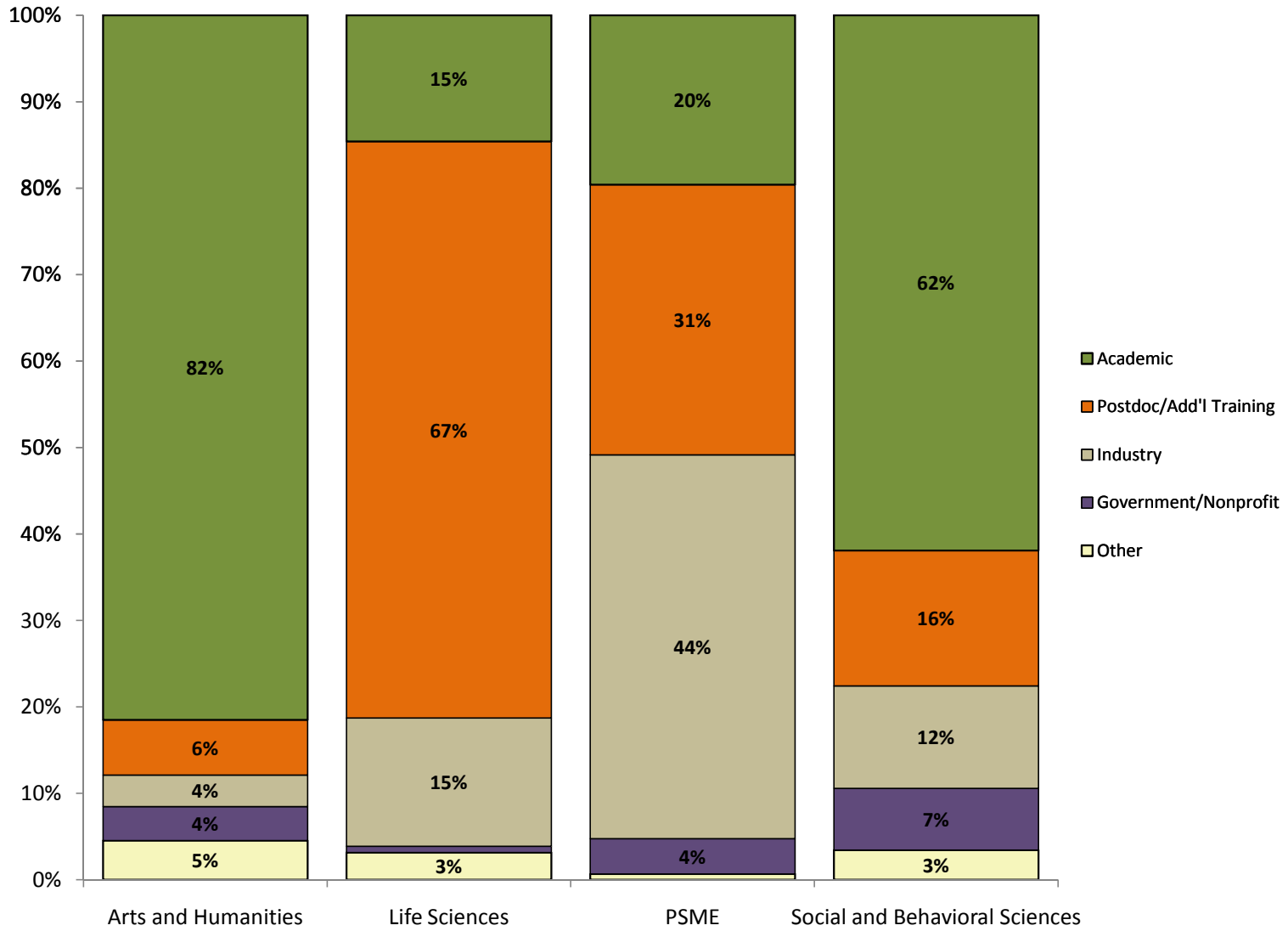
Physical Science, Mathematics, and Engineering PhD Graduates First Placement Category by Program, FY 1999 - FY 2008 Combined



Source: The Graduate School

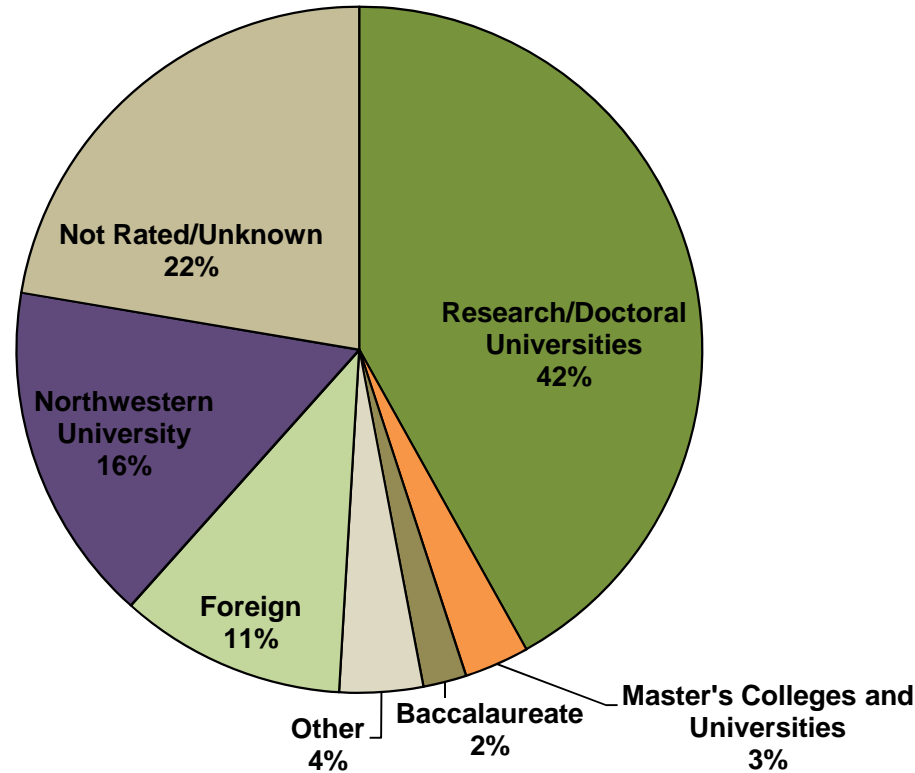
SBS Graduates with First Placement Information = 96%

All PhD Graduates, FY 1999 - FY 2008 Combined First Placement Category by Discipline Area



Source: The Graduate School

Physical Sciences, Mathematics, and Engineering PhD Graduates, FY 1999 - 2008 Combined Academic and Postdoctoral/Additional Training First Placement Carnegie Classification



Academic and Postdoctoral/Additional Training Placements = 685

The Carnegie Classification provides categories all U.S. Higher Education institutions into of the following general areas:

Research/doctoral universities are institutions that offer a variety of baccalaureate degrees and award at least ten doctoral degrees per year across at least three academic

Master's colleges and universities are institutions that offer a variety of baccalaureate degrees and award twenty or more master's degrees per year.

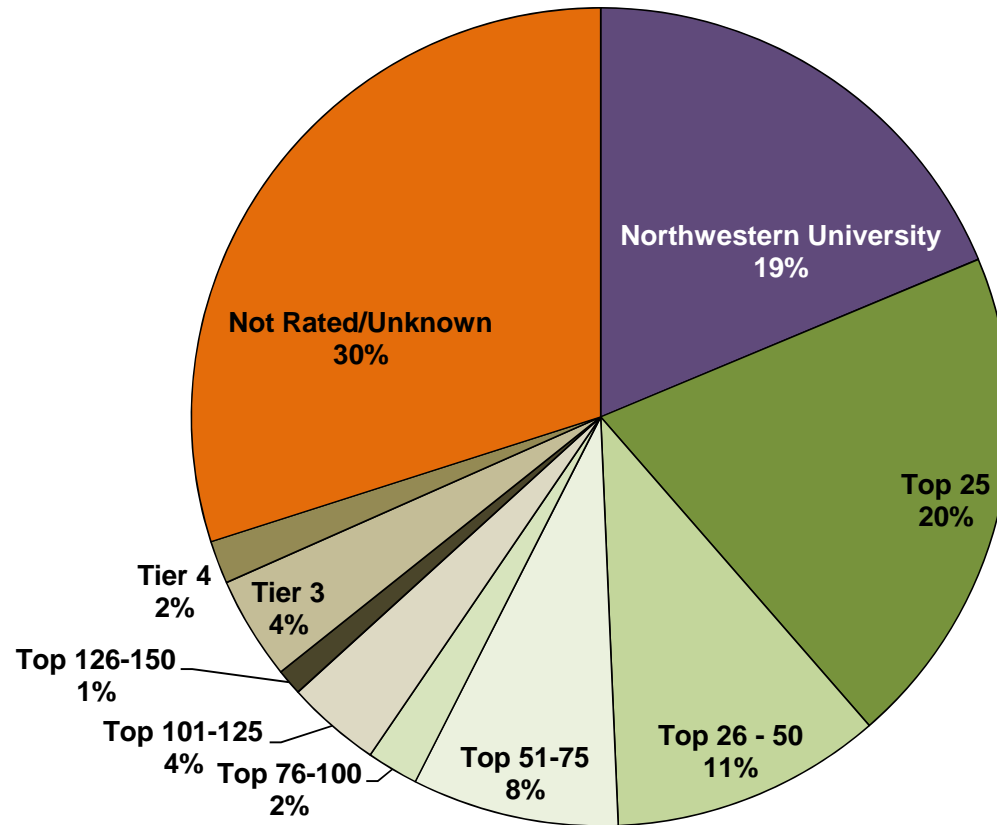
Baccalaureate colleges are institutions that award baccalaureate degrees.

Other includes colleges awarding associate degrees and specialized institutions that award degrees in a particular field such as medical and law schools, religious institutions,

Also included are **foreign** institutions outside of the U.S. that award higher education degrees.

Source: The Graduate School

**Physical Sciences, Mathematics, and Engineering PhD Graduates, FY 1999 - 2008 Combined
Academic and Postdoctoral/Additional Training First Placement
U.S. News and World Report 2009 Rankings for National Universities and Liberal Arts Colleges**



Academic and Postdoctoral/Additional Training Placements* = 588

The figure above shows the U.S. News and World Report ranking of national universities and liberal arts colleges where Northwestern University PhD

* Excludes foreign and not-for-profit and government positions.

Source: The Graduate School

Top 25 Most Frequent Employers by Category, listed by frequency

Academic	Post-Doctoral	Industry	Not for profit/Government
Northwestern University	Northwestern University	Intel Corporation	National Institute of Standards and Technology
Purdue University	Argonne National Laboratory	General Electric	Sandia National Laboratory
University of Maryland	Massachusetts Institute of Technology	Motorola, Inc.	Center for Naval Analysis
University of Illinois - Chicago	University of California - Berkeley	IBM	US Federal Government
Georgia Institute of Technology	California Institute of Technology	Exxon Mobil	NASA
University of Florida	University of Pennsylvania	Lucent Technologies	RAND Corporation
Washington State University	Harvard University	Unilever	Kaiser Permanente
University of Minnesota	Sandia National Laboratory	Dow Chemical Company	Sloan-Kettering Institute
University of Michigan	Stanford University	Baxter Healthcare Corporation	Nonprofit
Illinois Institute of Technology	University of Chicago	3M Corporation	Battelle Memorial Institute
University of North Carolina - Chapel Hill	Duke University	McKinsey and Company	Journal of Clinical Investigation
Johns Hopkins University	University of Minnesota	Abbott Laboratories	Chemical Abstracts Service
Pennsylvania State University	University of Illinois - Urbana Champaign	Hewlett-Packard	USA Swimming
Yale University	Cornell University	Siemens Medical Solutions	Evanston Northwestern Healthcare
University of Cincinnati	Los Alamos National Laboratory	Shell Oil Co.	American Dental Association
Stanford University	Johns Hopkins University	Universal Oil Products	Nonprofit Organization
University of Pittsburgh	National Institute of Standards and Technology	Samsung	Evanston Northwestern Hospital
Dayeh University	Scripps Research Institute	Rohm and Haas Company	Gas Technology Institute
Texas A&M University	University of Texas - Austin	Leydig, Voit & Mayer, Ltd.	The Wetlands Initiative
European Organization for Nuclear Research (CERN)	Boston University	Procter & Gamble	
University of Iowa	University of Illinois - Chicago	Booz-Allen & Hamilton	
Arizona State University	Columbia University	The Aerospace Corporation	
University of Southern California	University of Washington	Exponent, Inc.	
Kasetsart University	University of Michigan	Nalco	
Temple University	Ohio State University	Ford Motor Company	